

01.3



PENSTOCKS

GUILLOTINE SLUICE GATE



PENSTOCKS

GUILLOTINE SLUICE GATE

WHAT ABOUT

The DET07G Guillotine Sluice Gate is designed to work with liquids in open channels. It is sealed on three sides (bottom and the two sides) to prevent leaks. It is suitable for use with clean liquids or those with solid content from waste water treatment plants, irrigation farming, water treatment, pipes, etc.

The Guillotine Sluice Gate is intended to be installed on a concrete wall, plugging the hole in the channel. The water level may be adjusted by 0 - 0.5 metres. Bolts are positioned using metal or chemical anchors, using the framework holes as a guide.

PLATFORM (ALSO KNOWN AS HALF MOON)

Moves up and down to control the passing of the liquid. Made from stainless steel, it has reinforcement ribs sized according to the pressure to be resisted. It also includes special elastomer profiles to guarantee water tightness at the bottom and on the sides.

FRAME

Also made from stainless steel, with plate profiles cut by laser and folded, it has a special guidance system which uses parts made from low density polyethylene which lowers the friction coefficient when regulating the drop-down gate.

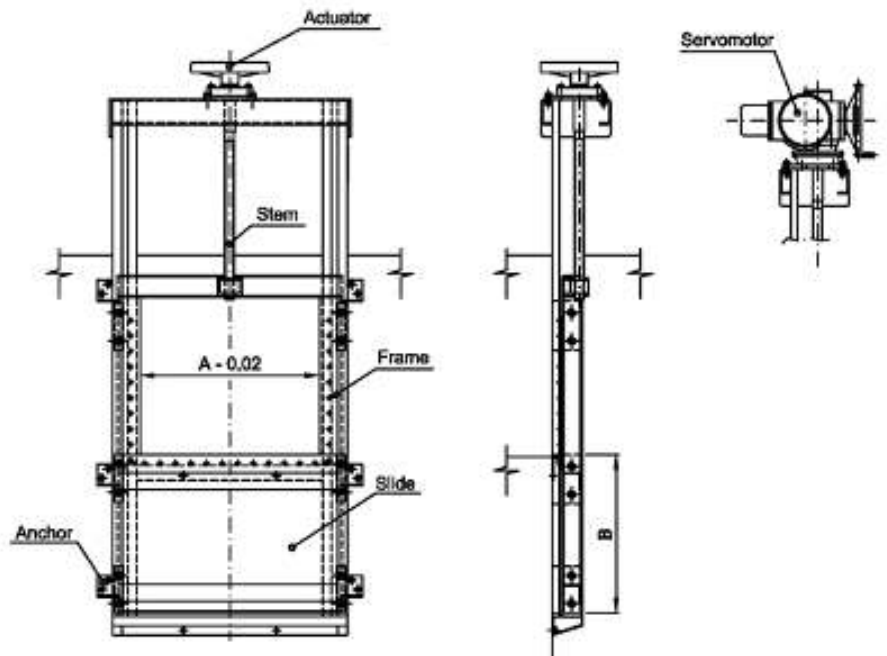
SPINDLE

Made from stainless steel, it has a DIN 103 trapezoidal thread which means it can support high loads with minimal wear. It is linked to a bronze nut, with the same threading, to form a design that does NOT allow upward movement of the spindle.

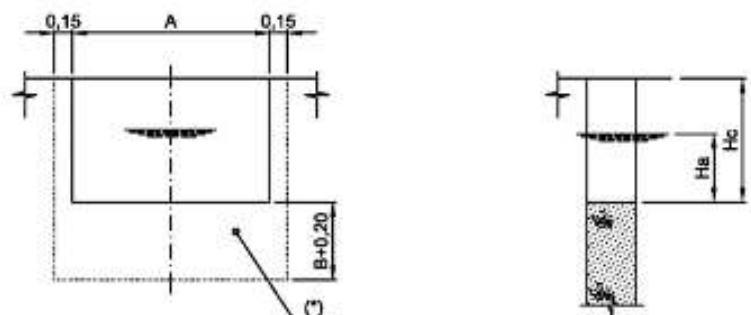
DRIVE

Possibilities for the guillotine sluice gate:

- Manual: using a \varnothing 300 mm polyamide steering wheel reinforced with fibreglass and a bearing to absorb the axial force.
- Motorised: choice between an electric drive with limit switches and torque limiter included, pneumatic cylinder and hydraulic cylinder.



ANCHORING



(*) : Even surface to support the frame weir.

Dimensions in meters