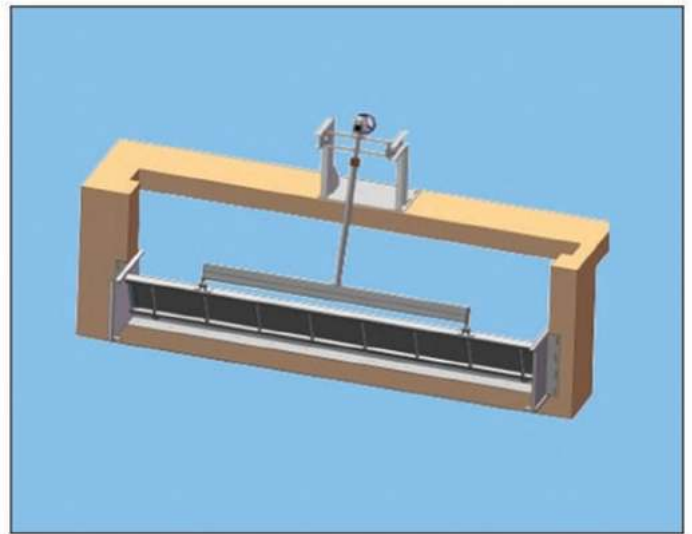


# 01.4



PENSTOCKS

## SLUICE SWING GATE



## PENSTOCKS

# SLUICE SWING GATE

### WHAT ABOUT

The DET07P Sluice Swing Gate is designed to work with liquids in open channels. It is sealed on the bottom and the two sides (three sides) to prevent leaks. It is suitable for use with clean liquids or those with solid content from waste water treatment plants, irrigation installations, pipes, treatment plants, etc.

The Sluice Swing Gate is intended to be installed on a concrete wall, plugging the hole in the channel. The water level may be adjusted by 0 - 0.3 metres.

### PLATFORM (ALSO CALLED HALF MOON)

swivels to control the passing of liquid. Made from painted or galvanised stainless or carbon steel, it has reinforcement ribs sized according to the pressure to be resisted. It also includes special elastomer profiles to guarantee water tightness at the base and on the sides.

### FRAME

Also made from painted or galvanised stainless or carbon steel, using folded laser-cut profiles in plate.

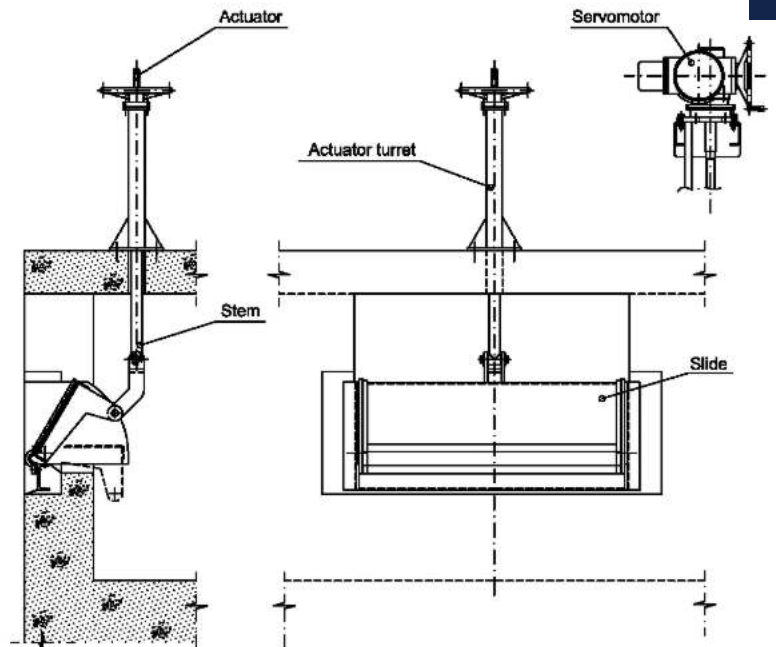
### SPINDLE:

Made from stainless steel, it has a DIN 103 trapezoidal thread which means it can support high loads with minimal wear. It is linked to a bronze nut, with the same threading, to form a design allowing upward movement of the spindle.

### DRIVE

Possibilities for the sluice swing gate:

- Manual: using a  $\varnothing$  400 mm polyamide steering wheel reinforced with fibreglass or die-cast and a ball bearing to absorb the axial force.
- Motorised: choice between an electric drive with limit switches and torque limiter included, pneumatic cylinder and hydraulic cylinder.



### ANCHORING

